



JPUN.ORG DECEMBER 2022

JEFFERSON PARK NEWS

A PUBLICATION OF JEFFERSON PARK UNITED NEIGHBORS A NON-PROFIT ORGANIZATION SERVING OUR NEIGHBORHOOD

JPUN GENERAL MEMBERSHIP MEETING

Zoom Meeting ID: 899 545 6713
Password: jefferson
Call-In: 312-626-6799
JPUN Holiday Party Thur. Dec 15
5:30-8pm, Highland Tap & Burger
Tuesday, Jan 10, 6:30-8:00pm
All are welcome

LAND-USE COMMITTEE MEETING

Zoom Meeting ID: 899 545 6713
Password: jefferson
Call-In: 312-626-6799
Thursday, Feb. 2, 6:30-8:00pm
Thursday, Mar. 2, 6:30-8:00pm
All are welcome

COUNCILWOMAN SANDOVAL VIRTUAL COMMUNITY OFFICE HOURS

Friday, Sept 9, 11:00am-1:00pm
Reserve a spot at: bit.ly/CD1OFFICEHOURS
Friday, Sept 16, 11:00am-1:00pm
- CD1 Office 1810 Platte St.

MAKE A TAX DEDUCTIBLE GIFT TO SUPPORT JPUN

As a non-profit 501(c)3 organization, your JPUN contribution is tax deductible. Send your contribution to: 2001 Eloit St. Denver, CO 80211

DID SOMEONE SEND YOU THIS E-NEWSLETTER?

To subscribe please email newsletter@jpun.org and type "E-NEWS PLEASE" in the subject line.

WE'D LOVE TO HEAR FROM YOU

Email any stories, comments or ideas to our Editor at: newsletter@jpun.org

GET NEIGHBORHOOD UPDATES

jeffersonpark.nextdoor.com and JPUN.org



Follow Jefferson Park United Neighbors on Facebook



Follow us on instagram.com @jeffparknews



Follow us on twitter.com @JeffParkNews

Start the season with a holiday selfie!



JPUN HOLIDAY PARTY HIGHLAND TAP & BURGER • 2219 W 32ND AVE THURSDAY, DECEMBER 15 • 5:30PM-8:30PM

Complimentary Appetizers and Happy Hour Drinks All Night

Join your friends and neighbors and celebrate the holiday season at JPUN's Annual Holiday Party on December 15, 5:30pm-8:30pm at Highland Tap & Burger part of the Culinary Creative Group who is opening Red Top Pizza in Jefferson Park in early 2023. There will be complimentary heavy appetizers and cash bar for Jefferson Park residents.

Lots of projects will happen in and around Jefferson Park in 2023 and beyond. We'll have representatives on hand showing off their latest designs and answering questions. Bring an appetite for food and knowledge.

Sponsored By



There will be three organizations attending JPUN's Holiday Event. This is your opportunity to learn and provide feedback

Ball Arena Redevelopment
Kroenke Sports & Entertainment –
55 Acre Redevelopment Around Ball Arena

Representatives from Kroenke Sports & Entertainment will have presentation material to view and answer any questions you may have about the potentially transformative new extension of downtown Denver. The project will compliment the Rive Mile Development on the Elitch's site and will include parks, hotels, over 6,700 unites of housing and a "Sports Mile Promenade" that will stretch from Coors Field past Ball Arena and end at Empower Field. More details can be found in our [October Newsletter](#).



Near Northwest Area Plan

The Near Northwest Planning Area is made up of the Northwest Denver neighborhoods east of Federal Boulevard: Chaffee Park, Sunnyside, Highland, and Jefferson Park. As part of the [Neighborhood Planning Initiative](#), this project provides an opportunity to create a long-term vision for these neighborhoods that furthers citywide goals and priorities while addressing local neighborhood needs.

Continues to page 4

WE'D LOVE TO HEAR FROM YOU

Email any stories, comments or ideas to our Editor at:
newsletter@jpun.org

All copy/photos/advertisements submitted to our Jefferson Park United Neighbors Newsletter will be edited and reviewed by our volunteer staff for style, grammar and content. JPUN reserves the right to refuse publication of any submitted material that does not meet our standards for a positive, educational community newsletter.

BECOME INVOLVED

Joining the JPUN community is an excellent way to support the residents and businesses in your neighborhood. There is no cost for membership and all property owners, renters, businesses and business-owners within the boundaries of the Jefferson Park neighborhood are welcome to join.

Benefits of joining our community:

- meet your neighbors and better connect with your local businesses
- participate in neighborhood events
- opportunities to plan the future of the area including zoning changes and redevelopment
- engage with others to ensure safety and security within the neighborhood
- easily connect with city government and public safety officials

For more information, please, contact us or
signup to **become a member.**

COMMUNITY RESOURCES

Police, Fire or Medical—EMERGENCY Dial 9-1-1

Gas Leak or Electrical Emergency—Xcel.....800-895-4999
select #1

City of Denver 3-1-1 Help Center.....3-1-1 or
720-913-1311

Police—City Non-Emergency Information.....720-913-2000

Police—District 1 Station Information only..... 720-913-0400

Denver Public Library.....720-865-1111

Regional Transportation District..... 303-299-6000

CUT THIS OUT AND POST IT SOMEWHERE FOR QUICK REFERENCE!

Jefferson Park Street Name Incorrect

It's Never Too Late.... Denver's Department of Transportation and Infrastructure (DOTI) has recently informed residents who live on W Front View Crescent Drive that the name of their street has been incorrect for 50+ years.



The correct name of the street, based on maps from 1881, is Front View Crescent. New street signs will be installed or revised, and DOTI is contacting USPS and utilities about the street name change. Hopefully the changes won't affect the delivery of holiday packages.

Update on Sloan's Lake Playground and Tennis Courts

Currently the parking lot west of the south tennis courts will be closed (see map below) during abatement and renovation of these courts. Asbestos abatement of the courts will follow the work plan coordinated by Colorado Department of Public Health and Environment and the Denver Department of Public Health and Environment, which includes a tent placed over the courts.

The project includes replacement of the south playground, tennis courts (including the addition of pickleball), and picnic facilities. Budget is set at \$3,500,000. Courts are expected to be completed in summer of 2023. The playground and picnic areas are expected to be completed in the spring of 2023.

For more information on this project page please visit [here](#).





Become a Snow Angel

Show kindness and offer to help your neighbors if they aren't able to shovel! Neighbors helping neighbors is one of the things that makes Denver great. You can volunteer to be an official "snow angel" at denvergov.org/snowangels or just do a #NeighborCheck.

There are all sorts of reasons why people may need assistance, or they may just not know what the city's rules are for keeping sidewalks clear. A simple conversation with a neighbor or just lending that helping hand will almost always resolve a snowy sidewalk faster than the city can, and it will preserve city resources for the rest of Denver's 3,000 miles of sidewalks.

Tips:

- Use the shovel to push the snow; don't lift it.
- Shovel early! When snow isn't shoveled, it gets packed down and becomes ice. Shoveling all the way to the pavement will also prevent ice from forming.
- Shovel into your yard and not into roadways and bike lanes.
- Salt can be damaging when it runs off into your lawn or the storm sewer with the snowmelt. Look for ecofriendly and pet-safe deicers.
- Be proactive and come up with a plan for addressing sidewalks now, before it's snowing.

Learn more at www.denvergov.org/Snow.

DENVER ASKS TO SHOVEL YOUR WALKS

Be a great neighbor!

Everyone enjoys safe, clear sidewalks – and it's everyone's responsibility to keep the sidewalks adjacent to their home or business clear and accessible.

Shovel all sidewalks, wheelchair ramps, and bus stops around your home as soon as it's practical and safe.

Businesses have 4 hours after the snow stops to shovel, and residents have 24 hours.

(RTD only shovels bus stops that have a shelter. If it's just a sign with no shelter, the resident/business is responsible for this sidewalk.)



Continued from page 1

Members of Denver's Community Planning and Development will be on hand to provide what the future will look like in our neighborhood and answer any questions you may have. [Get caught up by watching this video.](#)

New Bikeway in Jefferson Park

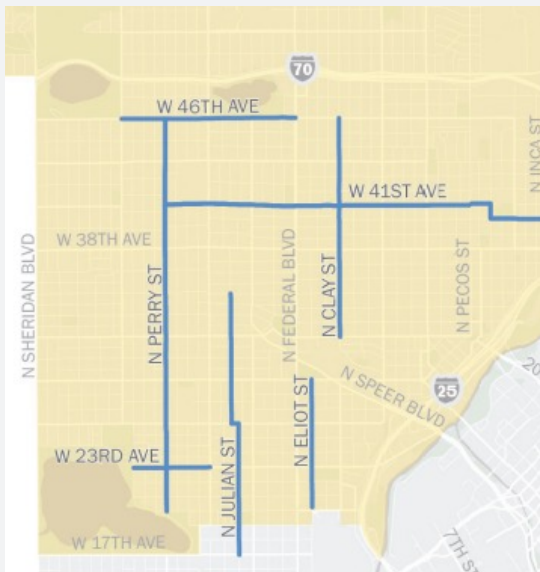
Denver Office of Transportation and Infrastructure (DOTI) is starting construction on the Community Transportation Networks – a program aimed at rapidly expanding safe and comfortable transportation options within three areas of Denver, with the goal to expand this program Citywide in the future. Bikeways installed through the Community Transportation Networks also play a critical role in meeting Denver's goal of 125 miles of new bikeways by 2023.

As part of this program, bikeway construction on N. Eliot St. from W. 23rd Ave. to W. 29th Ave. will begin in the coming weeks.

From W. 23rd Ave. to W. 26th Ave. and W. 27th Ave. to W. 29th Ave., a neighborhood bikeway will be installed, including new signage, striping, and vertical elements along the corridor to prioritize people walking and bicycling, while still allowing local vehicle trips and the majority of on-street parking.

From W. 26th Ave. to W. 27th Ave., a striped bike lane will be installed on both sides of the street. When complete, parking will be removed from the west side of this block.

Learn more about neighborhood bikeways at [NeighborhoodBikeway](#).



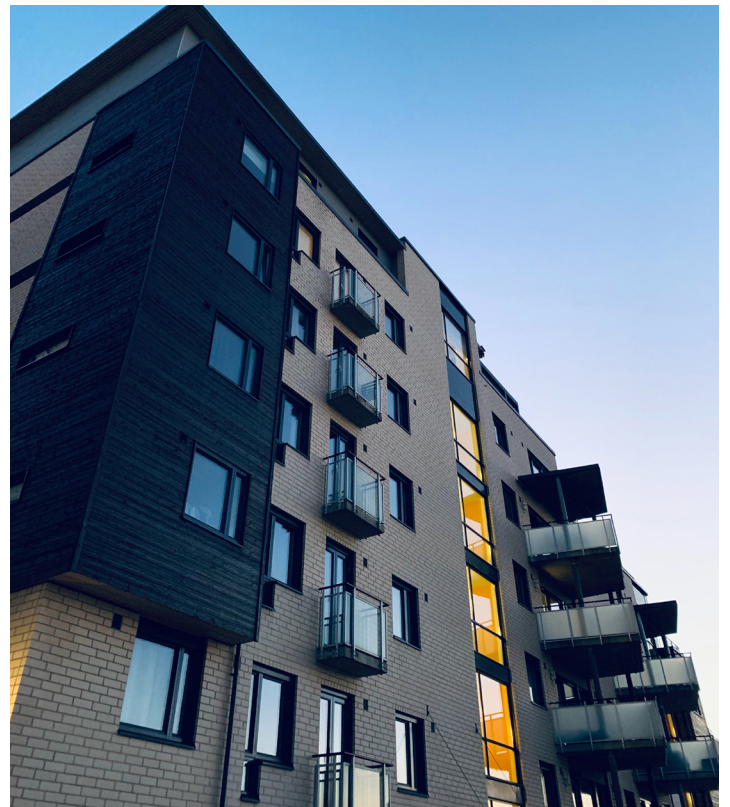
RESIDENTIAL RENTAL PROPERTY UPDATE

ANY PROPERTY WITH MORE THAN ONE UNIT OFFERED FOR RENT FOR MORE THAN 30 DAYS MUST APPLY FOR A RESIDENTIAL RENTAL LICENSE BY JAN. 1, 2023.

The Department of Excise and Licenses has made slight modifications to the inspection checklist and guidebook to better align with city partner agency requirements. The department sees these improvements as simplifying the residential rental license application process for customers.

Review these documents and use the current versions on their webpage as the most up-to-date copies.

If you have questions about the updates, email licenses@denvergov.org.



16th Street Mall Holiday Map

Grand Illumination

Nov. 25
5-7 p.m.
DOWNTOWN DENVER

Parade of Lights

Dec. 3
6 p.m.
DOWNTOWN DENVER

New Year's Eve Fireworks

Dec. 31
9 p.m. and midnight
16TH STREET MALL

Jingle Jog

Dec. 3
4:30 p.m.
MCNICHOLS BUILDING
COLFAX AND BANNOCK STREETS

Santa at the Station

Nov. 28, Dec. 5, Dec. 12, Dec. 19
11 a.m. - 4 p.m.
DENVER UNION STATION

Denver Downtown Ice Rink

Nov. 21 - Feb. 14
SKYLINE PARK

Holiday Festival

Nov. 12-13, 19-20, 26-27, Dec. 10
10 a.m. - 6 p.m.
WELTON & GLENARM STREETS

Mile High Tree

Nov. 18 - Dec. 31
CIVIC CENTER PARK

16TH STREET MALL PROJECT

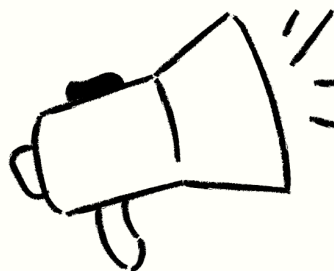
16TH STREET MALL Holiday Festival

The 16th Street Mall Holiday Festival is the Holiday shopping event of the year taking place on the historic 16th Street Mall in Downtown Denver. This highly attended curated marketplace will feature an awesome selection of one-of-a-kind seasonal items, high quality handcrafted goods, fabulous holiday gift ideas, delicious specialty foods, home décor, and unique holiday gifts.

Located in the Center of the Winter in the City attractions including a 100 foot LED Mile High Christmas Tree which is the largest electronic tree in North America and floats from the Parade of Lights. At the event there will be Christmas Carolers, Live entertainers, and appearances by Santa.

The event is also taking place before and during the 9News Parade of Lights on December 4th, which is a huge holiday parade in Downtown Denver that attracts hundreds of thousands of people.

Denver Noise Survey



Denver is reviewing and revising the local ordinance that governs noise

**WE WANT
YOUR INPUT**



Denver is reviewing and revising the local ordinance that governs noise, including construction and deliveries, music festivals, and other noise topics- and we need your help! Please help and provide your input by completing a survey.

If you would like to provide additional feedback or request information related to the ordinance stakeholder process, you may do so by emailing:

phicomments@denvergov.org

TAKE THE SURVEY

OPINION NEEDED FOR DENVER SKATEPARK IMPROVEMENTS

HOW WOULD YOU IMPROVE THE DENVER SKATEPARK DOWNTOWN?

Denver Parks and Recreation is planning repairs to the existing features at the Denver Skatepark (2205 19th St), and they need your input to help identify what would be most beneficial to those who use the skatepark!

Repairs are expected to be implemented in 2023.
Responses will be kept confidential.

The survey will be open through December 9, 2022.

www.surveymonkey.com



Editor Wanted

Want to know more about what is going on in and around your neighborhood?

Would you like to play an integral role in helping build community?

JPUN Newsletter plays a vital role in providing residents information on topics that directly affect them.

Help develop monthly newsletter content, coordinate with columnists and advertisers, assign stories, as well as review the final copy.

Please contact info@jpun.org to learn more about how you or someone you know can help fill this important volunteer role. Our readers are depending on you.



CARE FOR TREES BEFORE THE FREEZE!

As we all prepare our homes and gardens for winter, Denver's Office of the City Forester urges residents to think about the trees and how to keep our urban canopy healthy during its dormant season. And if the leaves are still falling as you're reading this, don't forget to grab a rake, gather them up and compost them in paper bags to keep them out of landfills. Yes, trees are resilient. But we can help them along by taking a few key steps to winterize them, so they stay healthier year-round.

Below are some simple tips, along with links to additional information, to make winter a wonderland for our urban canopy.

WINTER IS COMING

Get the most out of your irrigation system before it takes its well-earned seasonal hiatus. If you're not winterizing the system yourself, contact your local landscape company now to get on their schedule before freezing weather sets in. But first, remember to get your trees watered and mulched prior to shutting off the system.

TOO MU(L)CH IS NEVER ENOUGH!

Applying mulch around the tree before it settles in for its winter's nap is a good idea. A mulch ring around your tree holds moisture in and protects against temperature extremes. It decomposes and adds nutrients to the soil, too. We recommend learning the right way to mulch before getting started. Ever hear of a mulch volcano? Piling mulch too high around the base of the tree keeps oxygen out and can be deadly. Keep your mulch ring at least 6 inches away from the bark of the tree. Vertical mulching is a modern method that also improves soil conditions and allows for deeper water penetration. Vertical mulching removes columns of poor-quality soil around the tree, vertically, and then fills those columns with compost. Learn more about general tree care tips, including mulch. Bark on the southern/southwestern face of your trees is subject to a condition called sun scald. To avoid this, you can wrap your tree's trunk using materials like butcher paper, it's waterproof and removes/absorbs some of the energy that the sun produces.

A good rule of thumb is to install tree wrap around Thanksgiving and remove it around Easter.

WINTER NUTRITION TIPS

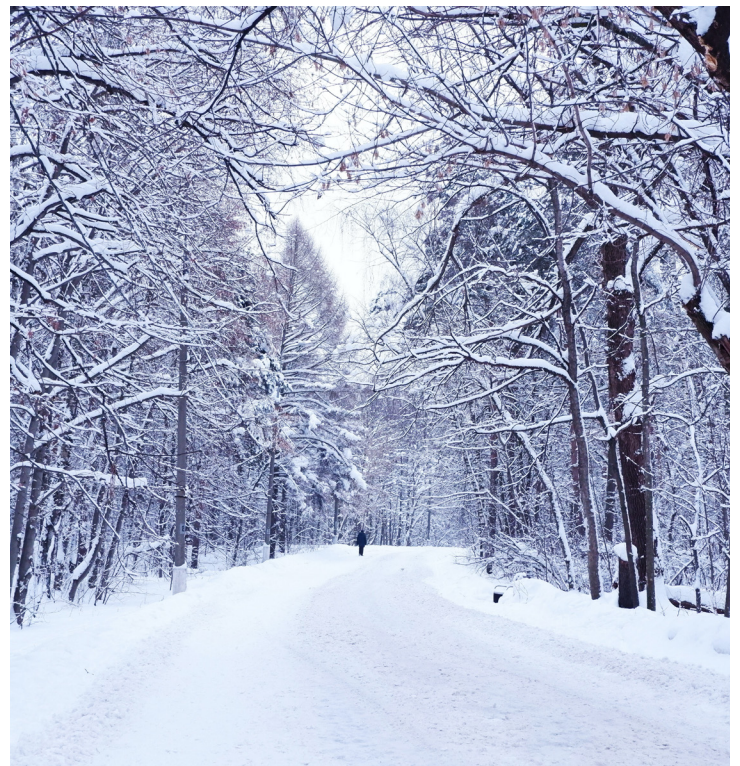
Remember: dormant doesn't mean dead, so feeding and watering trees during this season can help them spring back into action in the next. It's also wise to mow/mulch some of your tree leaves back into the turf to ensure the nutrients are making their way back to nature. But when it's 40 degrees or warmer – which is seen a lot during Denver winter – your tree still needs water, and snowfall just isn't enough. So learn how to water trees in winter and make a plan to stay on top of it. Your "buds" will thank you in the spring.

WINTER PRUNING

Would you be surprised to learn that winter is a good time to prune? Well, put on your parka because certain trees, including American elm and fruit trees in the rose family should only be pruned while dormant to reduce the spread of disease. If you are pruning something you can't reach from the ground, it's advised that you hire a tree care professional since they use specialized equipment and have training and expertise. In the City of Denver, tree contractors are required to be licensed and insured, and Denver has a list of licensed tree contractors for your convenience..

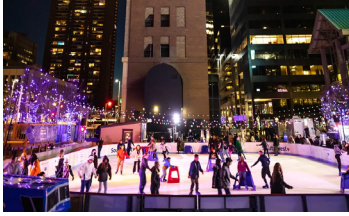
Learn more about watering, fertilization and protecting your trees with these frequently asked questions of winter tree care and give your trees a chance to thrive this season.

As always, if you need more information, please contact Denver's Office of the City Forester at forestry@denvergov.org or 720-913-0651.



THINGS YOU CAN WALK, BIKE, OR TAKE A HIKE TO

**Denver Downtown
Rink at Skyline Park**
Skyline Park
Thru Feb. 14, 2023
downtowndenver.com



Chanukah Celebration
Dec. 18, 2022
Cherry Creek North
denver.org



Holiday on the Block
Dairy Block
1800 Wazee Street
Through December
dairyblock.com



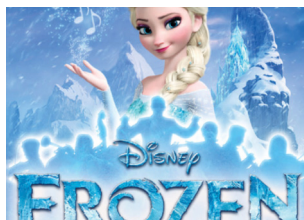
Mile High Tree
Civic Center Park
5 p.m. – 10 p.m.
Open every day
Through December
[denver.org/
milehighholidays/tree](http://denver.org/milehighholidays/tree)



**Snowboard in the
City at Ruby Hill
Rail Yard**
South Platte River Drive
and West Florida Avenue
Free to the Public
5 a.m. to 11 p.m.
denvergov.org



Disney's Frozen™ in Concert
Colorado Symphony
December 21
Boettcher Concert Hall
coloradosymphony.org/



**Denver
Christkindlmarket**
Civic Center Park
Recurring daily until
December 23, 2022
christkindlmarketdenver.com



Noon Year's Eve
December 31,
Childrens Museum
mychildsmuseum.org



Zoo Lights
Dec - January 15
2300 Steele St.
denverzoo.org



**Denver Botanic Gardens
Blossoms of Light**
November 18, 2022 –
January 7, 2023
Denver Botanic gardens
botanicgardens.org



**16th Street Mall
Holiday Festival**
Nov 27 - Dec 10
Downtown
coloradoevents.org



**Pre-New Year's
Eve with Chain Station**
New Terrain Brewing
16401 Table Mountain
Golden
6:00pm- 9:00pm
Free
eventvesta.com

